

PSI PIPE CLEANING PIGS

FOR FILLING, EMPTYING,
SEPARATING OR CLEANING

RESISTANT AGAINST OIL,
PETROL, METHANOL
AND OTHER CHEMICALS



WWW.PSI-PRODUCTS.COM



GENERAL INFORMATION



Filling, emptying, separating

PSI foam pigs are ideal tools for filling and emptying processes during hydrostatic tests and liquid transport, as well as when separating different media types transported through the same pipeline.

Drying

After pressure-testing (hydrostatic tests) the pipe need to be thoroughly dried, especially gas pipes. Low density, open pored PSI foam pigs are highly suitable for this application.

Cleaning

PSI foam pigs remove media residue from pipelines with great cleaning performance and also remove rust, deposits of various kinds and foreign particles.

PS foam pigs can be supplied in various densities and sizes from 2" to 48".

Larger sizes up to 64" upon request.

All types of pigs are resistant to oil, petrol, methanol and other chemicals in accordance with the PSI chemical resistance table.

Subject to technical changes.



More content can be found on
www.psi-products.com

DESCRIPTION / TECHNICAL DATA

Application range for:	type	material	ø inch	gravity kg/m ³	coating shore A
<ul style="list-style-type: none"> Drying Slight contamination Eliminating of air humidity Test pig for unknown contamination 	PU FP	PU-foam	2 - 64"	25	-
<ul style="list-style-type: none"> Drying For medium contamination without incrustation Suitable for long distances Dewatering Non-pressing sealing during maintenance work 	PU-Plain	PU-foam	2 - 64"	110	-
<ul style="list-style-type: none"> For medium contamination without incrustation Suitable for long distances Dewatering 	PU-Plain-S	PU-foam	2 - 24"	80	-
<ul style="list-style-type: none"> Cleaning of longer distances with reduction and heavy contamination Hydrostatic test Sealing 	PU-LR	PU-foam outer skin abrasion-proof PU	2 - 64"	110	90
<ul style="list-style-type: none"> Suitable for long distance cleaning with lots of fittings 	PU-LR-S	PU-foam outer skin abrasion-proof PU	2 - 24"	80	90
<ul style="list-style-type: none"> Removal of deposits Dewatering Cleaning long distances Hydrostatic test Cleaning prior to pipe commissioning 	PU-CC	PU-foam outer skin abrasion-proof PU at periphery PU-stripes (rotation effect)	2 - 64"	110	90
<ul style="list-style-type: none"> Removing deposits Cleaning prior to pipe commissioning 	PU-CC-S	PU-foam core Outer skin wear-resistant PU PU strip around circumference (rotation effect)	2 - 24"	80	90
<ul style="list-style-type: none"> Long distances with very heavy contamination Firmly bonded deposits Not suitable for plastic pipes	PU-AC	PU-foam core Spirally wound silicone carbide or corundum stripes. Top and bottom consist of	2 - 64"	110	90
<ul style="list-style-type: none"> Highest cleaning performance Heaviest encrustation Especially heavy rust Long distances Exceptionally firmly bonded deposit Not suitable for plastic pipes	PU-TWB	PU-foam core bottom and top abrasion-proof PU complete with steel brushes (plastic brushes possible)	2 - 64"	110	90

Temp °C	Running speed m/s	Service life in km*	∅-Reduction rate	min. radius bends	Fitting reduction
+5 - +80	1-4	ca. 45	50%	1.5 D	yes
+5 - +80	1-4	ca. 90	15%	1.5 D	-
+5 - +80	1-4	ca. 90	20%	1.5 D	yes
+5 - +80	1-4	ca. 90	10%	1.5 D	yes
+5 - +80	1-4	ca. 90	10%	1.5 D	yes
+5 - +80	1-4	ca. 90	10%	1.5 D	-
+5 - +80	1-4	ca. 90	15%	1.5 D	yes
+5 - +80	1-4	ca. 60	15%	1.5 D	yes
+5 - +80	2-5	ca. 90	5%	2.5 D	-

* The max. service live data given above are empirical values and may differ.

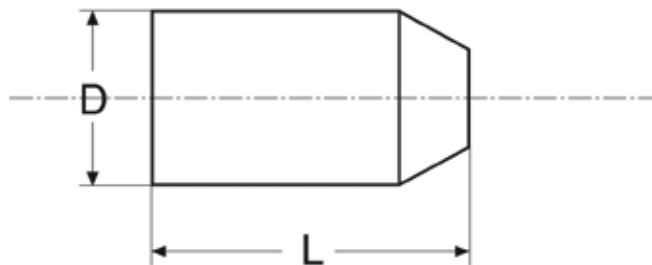
DESCRIPTION / TECHNICAL DATA

Application range for:	type	material	ø inch	gravity kg/m ³	coating shore A
<ul style="list-style-type: none"> • Strong encrustation • Especially heavy rust • Long pipelines • Exceptionally firmly bonded deposits use plastic brush for plastic pipes	PU-WB	PU-foam core helically inserted outer shell made of abrasion-proof PU, helically inserted wire brushes	2 - 64"	110	90
<ul style="list-style-type: none"> • Filling and draining of pipelines • To separate different liquids • Cleaning of soft deposits 	Flex S3	big body PU 3 exchangeable PU-collars	2 - 16"	-	75
		EPDM	2 - 16"	-	45-65
		NBR	2 - 16"	-	45-50
		CR Neoprene	2 - 16"	-	45
<ul style="list-style-type: none"> • To separate out different liquids • Displacement and cleaning pig for pipelines with parafin or similar deposits • Especially for pipelines with inner coating 	Flex S4	big body PU 4 exchangeable PU-collars	2 - 16"	-	75
		EPDM	2 - 16"	-	45-65
		NBR	2 - 16"	-	45-50
		CR Neoprene	2 - 16"	-	45
<ul style="list-style-type: none"> • Cleaning of pipelines with narrow bends • For hard deposits 	Flex C2	big body PU 2 exchangeable PU-collars + 2 steel wire brushes	2 - 16"	-	75
	Flex C3	big body PU 3 exchangeable PU-collars + 3 steel wire brushes	2 - 16"	-	75
<ul style="list-style-type: none"> • Calibration • Location and removal of objects 	Flex G2	big body PU 2 exchangeable PU-collars 1 calibration disc aluminium/steel/mild steel	2 - 16"	-	75
	Flex G3	big body PU 1 calibration disc aluminium/steel/mild steel	2 - 16"	-	75
		EPDM	2 - 16"	-	45-65
		NBR	2 - 16"	-	45-50
		CR Neoprene	2 - 16"	-	45
		FPM Viton	2 - 16"	-	50-80

Temp °C	Running speed m/s	Service life in km*	∅-Reduction rate	min. radius bends	Fitting reduction
+5 - +80	2-5	ca. 90	10%	2.5 D	-
-20 - +80	2-7	ca. 240	15%	3	-
-50 - +150	2-7	ca. 240	15%	3	-
-30 - +110	2-7	ca. 240	15%	3	-
-45 - +100	2-7	ca. 240	15%	3	-
-20 - +80	2-7	ca. 240	15%	3	-
-50 - +150	2-7	ca. 240	15%	3	-
-30 - +110	2-7	ca. 240	15%	3	-
-45 - +100	2-7	ca. 240	15%	3	-
-20 - +80	2-7	ca. 240	10%	3	-
-20 - +80	2-7	ca. 240	10%	3	-
-20 - +80	2-5	ca. 240	15%	2.5 D	-
-20 - +80	2-5	ca. 240	15%	2.5 D	-
-50 - +150	2-5	ca. 240	15%	2.5 D	-
-30 - +110	2-5	ca. 240	15%	2.5 D	-
-45 - +100	2-5	ca. 240	15%	2.5 D	-
-20 - +200	2-5	ca. 240	15%	2.5 D	-

* The max. service live data given above are empirical values and may differ.

TYPE FP



The nominal diameters (ND) indicated in the tables correspond to the inner diameter of the pipe.

The sizes are given in mm ($\pm 2\%$)

The order size is in inches.

Inch	ND	D	L	min. Pipe bend
2.0	50	75	150	1.5 D
2.5	65	90	200	1.5 D
3.0	80	100	220	1.5 D
4.0	100	130	250	1.5 D
5.0	125	150	275	1.5 D
6.0	150	190	300	1.5 D
7.0	175	200	320	1.5 D
8.0	200	230	360	1.5 D
10.0	250	290	430	1.5 D
12.0	300	350	560	1.5 D
14.0	350	400	600	1.5 D
16.0	400	450	700	1.5 D
18.0	450	520	750	1.5 D
20.0	500	570	800	1.5 D
22.0	550	620	850	1.5 D
24.0	600	670	900	1.5 D
26.0	650	730	1100	1.5 D
28.0	700	770	1100	1.5 D
30.0	750	840	1150	1.5 D
32.0	800	880	1250	1.5 D
34.0	850	930	1300	1.5 D
36.0	900	980	1350	1.5 D
40.0	1000	1080	1540	1.5 D
42.0	1050	1120	1680	1.5 D
44.0	1100	1190	1680	1.5 D
48.0	1200	1300	1800	1.5 D
56.0	1400	1500	2240	1.5 D
64.0	1600	1700	2520	1.5 D

Type FP

Pig body made of soft, open-pored polyurethane foam, strengthened with a water-tight polyurethane bottom.

Due to its great elasticity, pig type FP easily fits through valves, restrictors, elbows and 1.5 D bends.

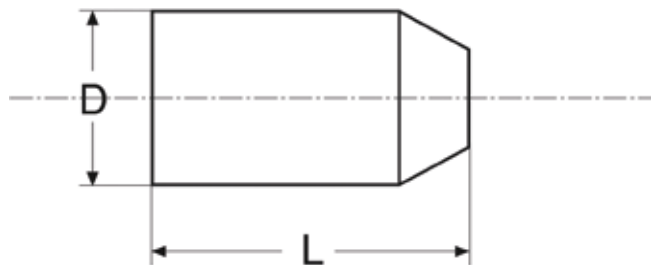
Possible diameter reduction by 50%.

Density: approx. 14-42 kg/m³ for type FP

Application: Drying pipelines, soft cleaning



TYPE PU-PLAIN AND PU-PLAIN S



Inch	ND	D	L	min. Pipe bend
2.0	50	60	160	1.5 D
2.5	65	75	155	1.5 D
3.0	80	85	155	1.5 D
4.0	100	110	195	1.5 D
5.0	125	139	220	1.5 D
6.0	150	168	266	1.5 D
7.0	175	177	280	1.5 D
8.0	200	215	330	1.5 D
10.0	250	260	415	1.5 D
12.0	300	321	510	1.5 D
14.0	350	346	530	1.5 D
16.0	400	410	595	1.5 D
18.0	450	455	660	1.5 D
20.0	500	505	760	1.5 D
22.0	550	555	810	1.5 D
24.0	600	605	880	1.5 D
26.0	650	665	990	1.5 D
28.0	700	710	945	1.5 D
30.0	750	760	1130	1.5 D
32.0	800	810	1170	1.5 D
34.0	865	855	1340	1.5 D
36.0	900	910	1370	1.5 D
40.0	1000	1010	1470	1.5 D
42.0	1050	1060	1580	1.5 D
48.0	1200	1220	1760	1.5 D

The nominal diameters ND indicated in the tables correspond to the inner diameter of the pipe.

The sizes are given in mm ($\pm 2\%$).

The order size is in inches.

Type PU-Plain

Made of high-density polyurethane foam, reinforced with a water-tight polyurethane bottom.

For soft cleaning or drying of long distances after water passes through.

Density approx. 128-160 kg/m³. This type easily passes through 1.5 D bends.

Also available with coated top (standard from 16”).

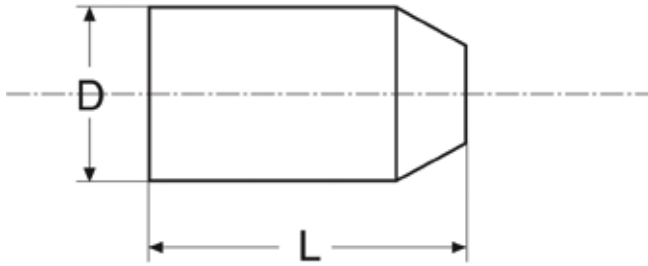


Type PU-Plain-S

Same as type PU-Plain, but softer. Density approx. 80-85 kg/m³. Only available up to size 24”. Also available with coated top (standard from 16”).



TYPE PU-LR AND PU-LR-S



Inch	ND	D	L	min. Pipe bend
2.0	50	60	155	1.5 D
2.5	65	72	155	1.5 D
3.0	80	85	155	1.5 D
4.0	100	110	195	1.5 D
5.0	125	135	220	1.5 D
6.0	150	165	266	1.5 D
7.0	175	177	280	1.5 D
8.0	200	215	330	1.5 D
10.0	250	267	415	1.5 D
12.0	300	317	480	1.5 D
14.0	350	346	530	1.5 D
16.0	400	410	595	1.5 D
18.0	450	463	760	1.5 D
20.0	500	513	760	1.5 D
22.0	550	563	810	1.5 D
24.0	600	613	880	1.5 D
26.0	650	673	990	1.5 D
28.0	700	718	945	1.5 D
30.0	750	768	1130	1.5 D
32.0	800	818	1170	1.5 D
34.0	865	863	1340	1.5 D
36.0	900	918	1370	1.5 D
40.0	1000	1018	1470	1.5 D
42.0	1050	1068	1580	1.5 D
48.0	1200	1228	1760	1.5 D

The nominal diameters ND indicated in the tables correspond to the inner diameter of the pipe.

The sizes are given in mm ($\pm 2\%$).

The order size is in inches.

Type PU-LR

Made of high density polyurethane foam with an outer skin made of high quality, wear- resistant polyurethane (hardness approx. 90 Shore A).

Recommended for cleaning long, straight pipe sections, also with narrow spots and heavier contamination.

Density approx. 128-160 kg/m³.

This type easily passes through 1.5 D bends.



Type PU-LR-S

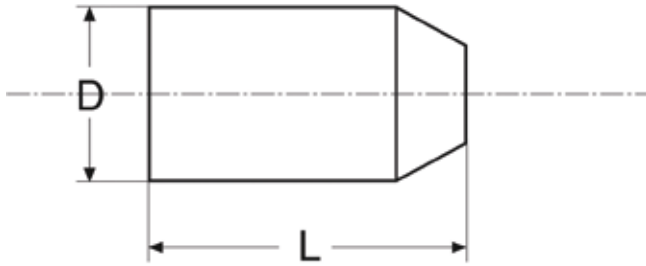
The same as type PU-LR, however with a softer core (hardness approx. 55 Shore). Recommended for cleaning pipe sections with lots of fittings and narrowing.

Density approx. 80-85 kg/m³.

Only available up to size 24”.



TYPE PU-CC AND PU-CC-S



Inch	ND	D	L	min. Pipe bend
2.0	50	60	155	1.5 D
2.5	65	72	155	1.5 D
3.0	80	85	155	1.5 D
4.0	100	110	195	1.5 D
5.0	125	135	220	1.5 D
6.0	150	165	266	1.5 D
7.0	175	177	280	1.5 D
8.0	200	215	330	1.5 D
10.0	250	267	415	1.5 D
12.0	300	319	480	1.5 D
14.0	350	346	530	1.5 D
16.0	400	410	595	1.5 D
18.0	450	463	760	1.5 D
20.0	500	513	760	1.5 D
22.0	550	563	810	1.5 D
24.0	600	613	880	1.5 D
26.0	650	673	990	1.5 D
28.0	700	718	945	1.5 D
30.0	750	768	1130	1.5 D
32.0	800	818	1170	1.5 D
34.0	865	863	1340	1.5 D
36.0	900	918	1370	1.5 D
40.0	1000	1018	1470	1.5 D
42.0	1050	1068	1580	1.5 D
48.0	1200	1228	1760	1.5 D

The nominal diameters ND indicated in the tables correspond to the inner diameter of the pipe.

The sizes are given in mm ($\pm 2\%$).

The order size is in inches.

Type PU-CC

Made of high density polyurethane foam. The outer skin of high quality, wear-resistant polyurethane is made up of spirally coiled stripes around the circumference. These make the pig rotate as it moves thus giving it great flexibility.

Recommended for evenly removing deposits and dewatering, for example after hydrostatic tests. The type PU-CC easily passes through 1.5 D bends. Density approx. 110-115 kg/m³.

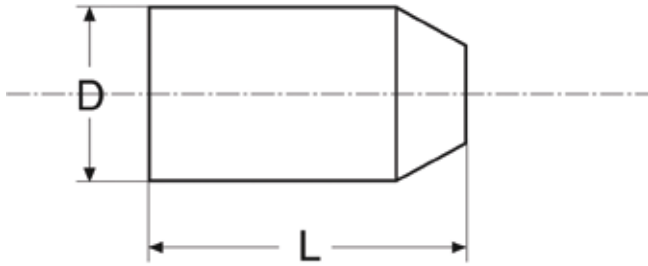


Type PU-CC-S

Same as type PU-CC, however with a softer core. Density approx. 80-85 kg/m³. Only available up to size 24”.



TYPE PU-WB AND PU-TWB



Inch	ND	D	L	min. Pipe bend
2.0	50	60	155/145*	1.5 D
2.5	65	73	155/165*	1.5 D
3.0	80	85	155	1.5 D
4.0	100	110	195	1.5 D
5.0	125	139	220	1.5 D
6.0	150	168	266	1.5 D
7.0	175	177	280	1.5 D
8.0	200	215	330	1.5 D
10.0	250	260	415	1.5 D
12.0	300	321	510	1.5 D
14.0	350	346	530	1.5 D
16.0	400	400	595	1.5 D
18.0	450	463	760	1.5 D
20.0	500	513	760	1.5 D
22.0	550	563	810	1.5 D
24.0	600	613	880	1.5 D
26.0	650	673	990	1.5 D
28.0	700	718	945	1.5 D
30.0	750	768	1130	1.5 D
32.0	800	818	1170	1.5 D
34.0	865	863	1340	1.5 D
36.0	900	918	1370	1.5 D
40.0	1000	1018	1470	1.5 D
42.0	1050	1068	1580	1.5 D
48.0	1200	1228	1760	1.5 D

The nominal diameters ND indicated in the tables correspond to the inner diameter of the pipe.

The sizes are given in mm ($\pm 2\%$).

The order size is in inches.

Type PU-WB

Made of high density polyurethane foam. The outer skin is made of high-density, wear-resistant polyurethane foam applied in strips causing the pig to rotate as it moves. Steel brushes applied in strips increase the cleaning effect. The brushes are embedded in the pig.

Recommended to remove heavy deposits and particularly heavy rust, also in long pipelines. This type easily passes through 3.0 D bends. Density approx. 110-115 kg/m³.



Typ PU-TWB

Same as PU-WB, however, without polyurethane stripes on the surface but entirely coated with wire brush

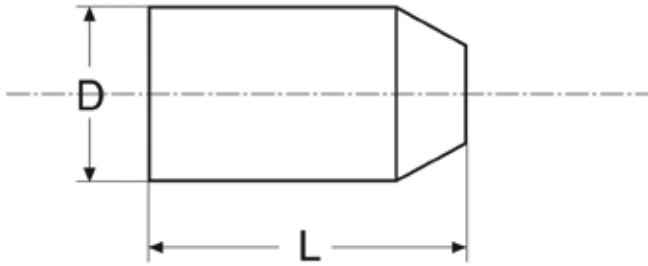
Density approx. 110-115 kg/m³.



* Typ PU-TWB

Subject to technical changes

TYPE PU-AC AND SPECIAL VERSIONS



Inch	ND	D	L	min. Pipe bend
2.0	50	64	155	1.5 D
2.5	65	79	155	1.5 D
3.0	80	89	155	1.5 D
4.0	100	114	195	1.5 D
5.0	125	143	220	1.5 D
6.0	150	172	266	1.5 D
7.0	175	181	280	1.5 D
8.0	200	219	330	1.5 D
10.0	250	274	415	1.5 D
12.0	300	325	510	1.5 D
14.0	350	350	530	1.5 D
16.0	400	414	595	1.5 D
18.0	450	459	760	1.5 D
20.0	500	509	760	1.5 D
22.0	550	559	810	1.5 D
24.0	600	609	880	1.5 D
26.0	650	669	990	1.5 D
28.0	700	714	945	1.5 D
30.0	750	764	1130	1.5 D
32.0	800	814	1170	1.5 D
34.0	865	859	1340	1.5 D
36.0	900	914	1370	1.5 D
40.0	1000	1014	1470	1.5 D
42.0	1050	1064	1580	1.5 D
48.0	1200	1224	1760	1.5 D

The nominal diameters ND indicated in the tables correspond to the inner diameter of the pipe.

The sizes are given in mm ($\pm 2\%$).

The order size is in inches.

Type PU-AC (Abrasive Coated)

Same as PU - CC, however with an additional carbon coating all around. Recommended for removing heavy contamination, incrustated deposits and corrosion also in long pipelines.

This type easily passes through 1.5 D bends.
Density approx. 110-115 kg/m³.



PSI-Pigs special versions

Loops

All foam pigs can be equipped with one or two loops if required. Starting with ND 20" one loop on the top is standard.

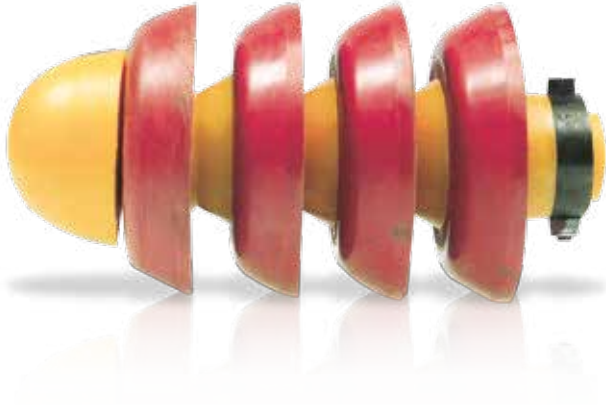
Various shapes

All pigs can be supplied either conically or cylindrically shaped on both sides. Such pigs are suitable for bi-directional operations (forwards and backwards).

Brush pigs

Made of a hard wooden core with nylon brush. For easy cleaning of short pipes.

GENERAL INFORMATION



For separating, filling and emptying, cleaning, gauging

PSI cup pigs are ideal tools for cleaning and gauging pipelines. These pigs are equipped with replaceable polyurethane cups and/or circular wire brushes mounted to the flexible polyurethane body available up to 24".

Steel body available upon request.

(available size 2"-56")

Subject to technical changes.

TYPE FLEX-S3 AND FLEX-S4



inch	ND	A		B		Weight kg	min. Pipe bend
		inch	mm	inch	mm		
2.0	50	5.12	130	3.94	100	0.35	1.5 D
3.0	80	7.28	185	4.92	125	0.55	1.5 D
4.0	100	8.27	210	6.10	155	0.80	1.5 D
6.0	150	12.80	325	8.66	220	3.00	1.5 D
8.0	200	15.55	395	11.42	290	5.00	1.5 D
10.0	250	19.29	490	14.57	370	9.00	1.5 D
12.0	300	21.85	555	17.32	440	13.00	1.5 D
14.0	350	24.41	620	19.29	490	20.00	1.5 D
16.0	400	27.17	690	22.05	560	26.00	1.5 D



inch	ND	A		B		Weight kg	min. Pipe bend
		inch	mm	inch	mm		
2.0	50	5.12	130	3.94	100	0.40	1.5 D
3.0	80	7.28	185	4.92	125	0.60	1.5 D
4.0	100	8.27	210	6.10	155	1.00	1.5 D
6.0	150	12.80	325	8.66	220	3.50	1.5 D
8.0	200	15.55	395	11.42	290	6.00	1.5 D
10.0	250	19.29	490	14.57	370	11.00	1.5 D
12.0	300	21.85	555	17.32	440	16.00	1.5 D
14.0	350	24.41	620	19.29	490	23.00	1.5 D
16.0	400	27.17	690	22.05	560	32.50	1.5 D

Type Flex-S3

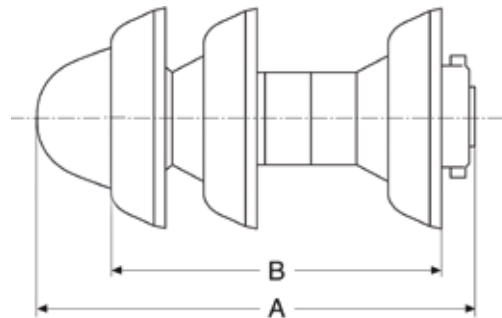
These pigs are equipped with three replaceable polyurethane cups mounted on an extremely flexible polyurethane body.

This type easily passes through 1.5 D bends. Since the pigs are entirely made of polyurethane, they are particularly suitable for internally coated pipelines.

Separation pigs can also be used as displacement or cleaning pigs for pipelines with paraffin or similar deposits and for cleaning new pipelines.

For special applications the pigs are available in natural color polyurethane without addition of coloring substances.

Guide bars in the opening are recommended for T-pieces when their branch opening is 75% of the pipe ID.

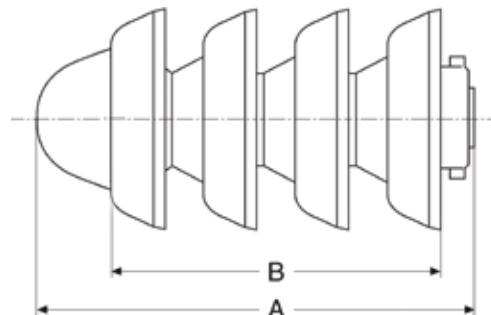


Type Flex-S4

Type Flex-S4 corresponds to type Flex-S3, but it is equipped with four replaceable polyurethane cups.

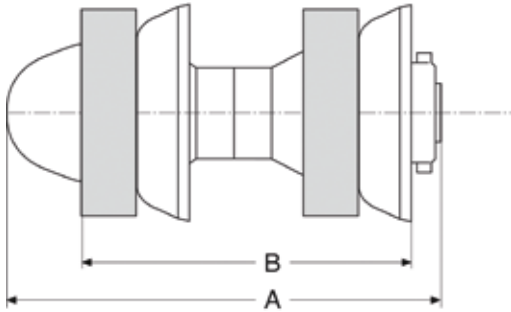
Available spare parts

- Standard cup
- Pig body
- Diabolo spacers
- Ring spacers
- Socket head bolt
- Self-locking nuts
- Steel security ring



Subject to technical changes.

TYPE FLEX-C2 AND FLEX-C3



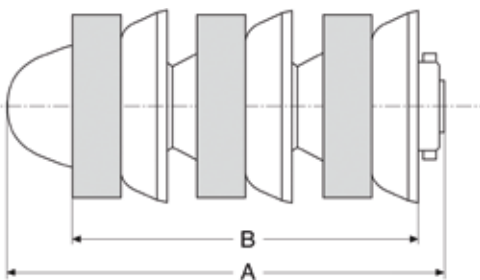
Type Flex-C2

Type Flex-C2 is equipped with 2 polyurethane cups and circular steel wire brushes mounted to the flexible polyurethane body. This type easily passes through 1.5 D bends.

This type is also available with stainless steel brushes or plastic brushes for internally coated pipelines.

Guide bars in the opening are recommended for T-pieces when their branch opening is 75% of the pipe ID.

inch	ND	A		B		Weight kg	min. Pipe bend
		inch	mm	inch	mm		
2.0	50	5.12	130	3.94	100	0.60	1.5 D
3.0	80	7.28	185	4.92	125	0.90	1.5 D
4.0	100	8.27	210	6.10	155	1.10	1.5 D
6.0	150	12.80	325	8.66	220	4.00	1.5 D
8.0	200	15.55	395	11.42	290	7.00	1.5 D
10.0	250	19.29	490	14.57	370	11.00	1.5 D
12.0	300	21.85	555	17.32	440	15.00	1.5 D
14.0	350	24.41	620	19.29	490	24.00	1.5 D
16.0	400	27.17	690	22.05	560	29.00	1.5 D



Type Flex-C3

Type FLEX-C3 corresponds to type FLEX-C2, but it is equipped with 3 steel wire brushes and 3 polyurethane cups.

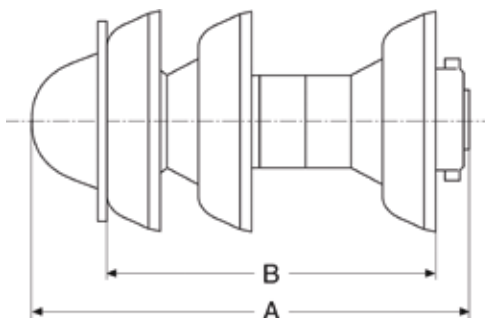
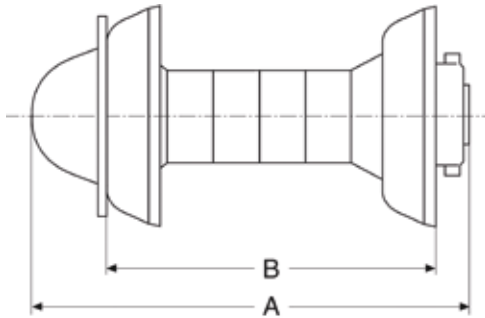
Available spare parts

- Standard Cup
- Body-shaft
- Diabolo spacers
- Ring spacer
- Socket head bolt
- Self-locking nuts
- Steel security ring
- Steel brush

inch	ND	A		B		Weight kg	min. Pipe bend
		inch	mm	inch	mm		
2.0	50	5.12	130	4.13	100	0.90	1.5 D
3.0	80	7.28	185	5.91	125	1.00	1.5 D
4.0	100	8.27	210	6.50	155	1.50	1.5 D
6.0	150	12.80	325	10.24	220	5.50	1.5 D
8.0	200	15.55	395	12.21	290	10.00	1.5 D
10.0	250	19.29	490	14.57	370	15.00	1.5 D
12.0	300	21.85	555	16.34	440	21.00	1.5 D
14.0	350	24.41	620	17.72	490	32.00	1.5 D
16.0	400	27.17	690	20.47	560	39.00	1.5 D

Subject to technical changes.

TYPE FLEX-G2 AND FLEX-G3



Type Flex-G2

Gauging pigs are used to check if welded seams do not have any excessive weld penetration. Gauging pigs are also used to localize and remove objects which could prevent pigs from passing through.

Mounted on a very flexible pig body, these pigs are optionally available with two (FLEX-G2) or three (FLEX-G3) replaceable polyurethane cups and a gauging plate. The diameter of the gauging plate is normally 90% or 95% of the pipe ID. When ordering, please specify the precise diameter of the gauging plate.

This type of pig easily passes through 2.5 D bends.

Guide bars in the opening are recommended for T-pieces when their branch opening is 75% of the pipe ID.

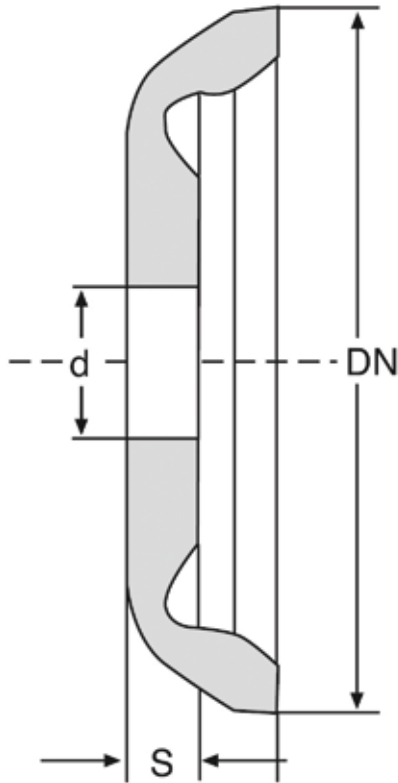
Flex-G2 und Flex-G3

inch	ND	A		B		Weight kg	min. Pipe bend
		inch	mm	inch	mm		
2.0	50	5.12	130	3.94	100	0.40	2.5 D
3.0	80	7.28	185	4.92	125	0.60	2.5 D
4.0	100	8.27	210	6.10	155	1.08	2.5 D
6.0	150	12.80	325	8.66	220	3.00	2.5 D
8.0	200	15.55	395	11.42	290	5.00	2.5 D
10.0	250	19.29	490	14.57	370	9.00	2.5 D
12.0	300	21.85	555	17.32	440	12.00	2.5 D
14.0	350	24.41	620	19.29	490	18.00	2.5 D
16.0	400	27.17	690	22.05	560	25.00	2.5 D

Available spare parts

- Standard Cup
- Body-shaft
- Diabolo spacers
- Ring spacer
- Socket head bolt
- Self-locking nuts
- Steel security ring
- Gauging plate

PIG CUPS



The cups are particularly wear-resistant. This exceptional wear resistance, combined with a unique cup design, ensures a maximum cleaning and sealing effect.

The cups are resistant to most products carried in pipelines. They are resistant to natural gas, crude oil, refined hydrocarbon products, most chemicals, vegetable oils and food products.

For special applications the cups are also available in natural colored polyurethane without addition of coloring substances.

		S		d		Weight
inch	ND	inch	mm	inch	mm	kg
2.0	50	0.32	8	0.41	14	0.02
3.0	80	0.39	10	1.06	20	0.04
4.0	100	0.47	12	1.06	27	0.12
6.0	150	0.79	20	1.91	49	0.32
8.0	200	0.87	22	1.91	49	0.70
10.0	250	0.98	25	2.38	61	1.40
12.0	300	1.10	28	2.38	61	2.30
14.0	350	1.22	31	3.01	76.5	3.20
16.0	400	1.38	35	3.01	76.5	5.00

The centre hole on the cup can be modified to suit customer requirements.

Subject to technical changes.

SELECTION-QUESTIONS

Important questions on the use of pigs	
1. The currently existing C-factor or %-efficiency loss compared to the ideal value:	
2. Type of medium in the pipeline (water, gas, oil, etc.)	
3. Inside and outer diameter of pipe (changing inner diameter) Transitions (sharp-edges or smooth)	
4. Dimensions of Junctions, cross or T-pieces, valves, etc. (attach piping plan)	
5. Pipe laying depth	
6. Type of deposits e.g. limescale, mud, etc.:	
7. Amount of deposits (approx. pipe ID)	
8. Pipe length	
9. Planned driving medium for the pig	
10. What pressure output is available for cleaning?	
11. Which maximum pressure is allowed for the pipe system?	
12. Entry and exit possibilities:	
13. Comment or further details which are considered to be important:	

Company _____

Contact _____

Street _____

Town _____

Phone _____

Fax. _____

Email _____

SELECTION GUIDE

Types of pig	PU-FP	PU-Plain	PU-Plain-S	PU-LR	PU-LR-S	PU-CC	PU-CC-S
For the following application areas:							
test run	X	X	X				
drying	X	X	X				
with slight contamination	X						
with medium contamination		X	X			X	X
with severe contamination				X	X		
elimination of humidity	X						
test pig for unknown contamination	X						
for long pipe sections		X	X	X	X	X	X
dewatering		X	X			X	
with many fittings					X		X
with persistent deposits							
for the removal of corrosion							
filling and emptying pipes							
hydrostatic test				X		X	
for separating various media							
for paraffin or similar deposits							
calibration							
localization (with transmitter + receiver)			X	X	X	X	X
for fitting reduction	X		X		X		X
For the following pipes:							
steel	X	X	X				
cast iron	X	X	X	X	X	X	X
plastic	X	X	X	X	X	X	X
with inner coating							
Suitability for pipe bends - designs:							
3	X	X	X	X	X	X	X
5	X	X	X	X	X	X	X

PU-AC	PU-TWB	PU-WB	Flex S3	Flex S4	Flex C2	Flex C3	Flex G2	Flex G3
			X					
				X				
X	X	X			X	X	X	X
X	X	X	X	X	X	X	X	X
X			X		X		X	
X	X	X			X	X	X	X
X	X	X			X	X		
			X	X				
			X	X				
			X	X				
							X	X
X	X	X	X	X	X	X	X	X
			X	X	(X)	(X)	X	X
			X	X	(X)	(X)	X	X
			X	X	(X)	(X)	X	X
X			X	X	X	X	X	X
X	X	X	X	X	X	X	X	X

(X) limited suitability



PSI Products GmbH

Ulrichstrasse 25
72116 Mössingen / Germany

Phone: 0 049 (0)7473 3781 0
Fax: 0 049 (0)7473 3781 35
E-Mail: vertrieb@psi-products.de

www.psi-products.de